



# Wireless Sensor Setup

(((ECHOMETER)))

## 1 Connect Base Station

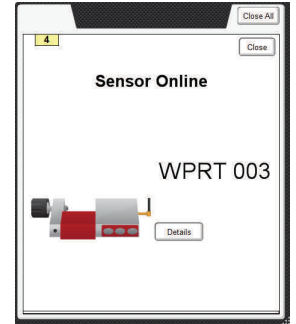
Connect wireless base to computer with USB cable



## 2 Turn on Sensor

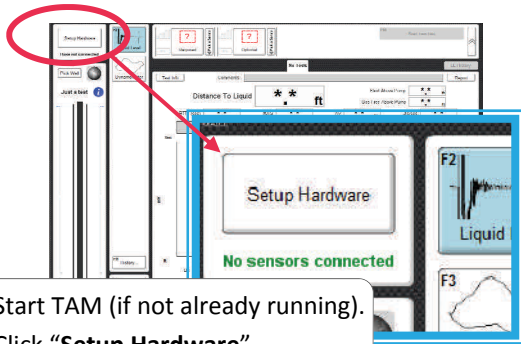


Turn on wireless sensor

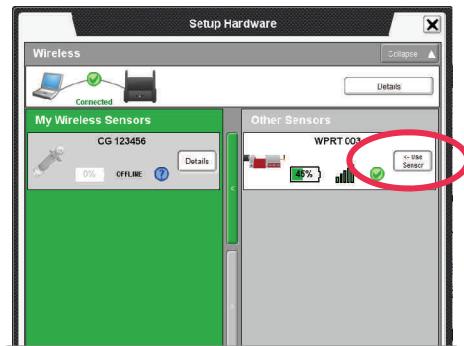


Popup briefly appears

## 3 Add Sensor to My Sensors

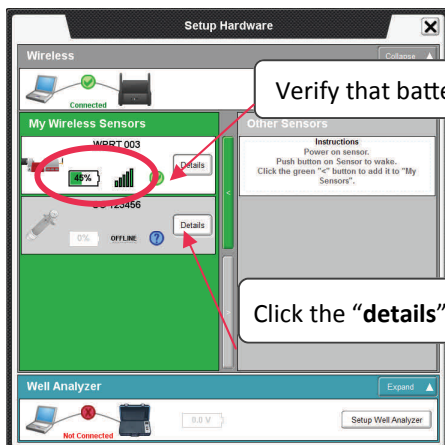


Start TAM (if not already running).  
Click "Setup Hardware".



Add the sensor to My Sensors by clicking  
"Use Sensor" (if not already listed under  
"My Wireless Sensors")

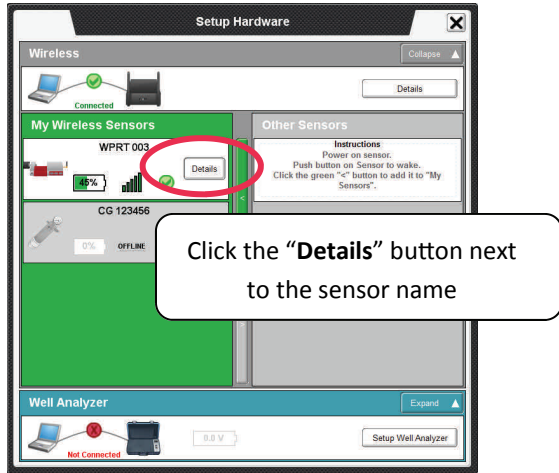
## 4 Verify Battery & Signal



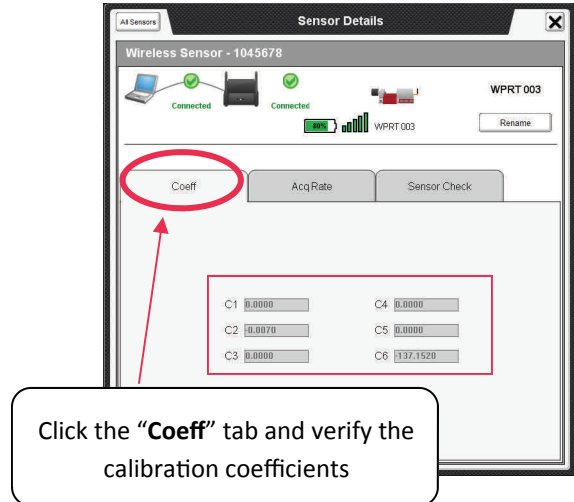
Verify that battery level and signal strength are good

Click the "details" button to proceed with sensor setup

## 5 Open Detail Screen



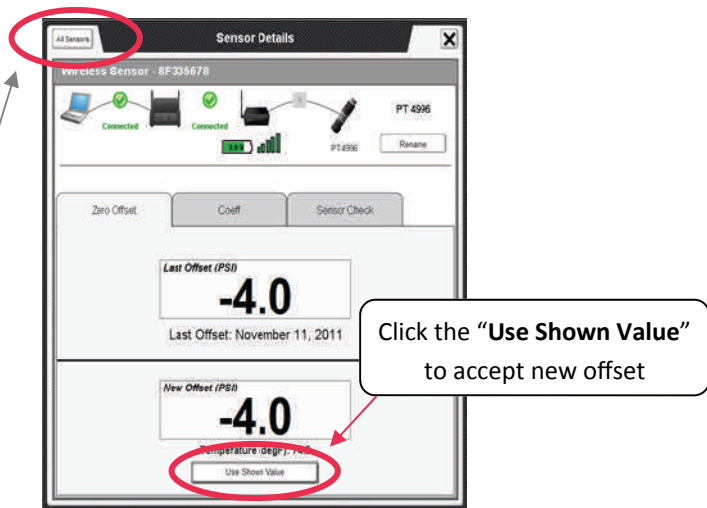
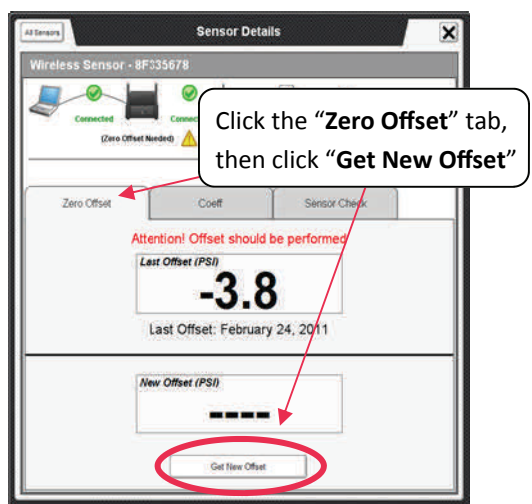
## 6 Verify Coefficients



For WPRT's no additional setup is required. You may close the popup window and proceed with testing.

## 6 Zero Offset (WHT, WRFG, and WPT)

Verify that the **WHT** sensor is not loaded and that the pressure is atmospheric for **WPT** and **WRFG**



Click the "All Sensors" button to return to the main setup screen and configure other devices, or close the popup window to proceed with testing. Changes will save automatically.