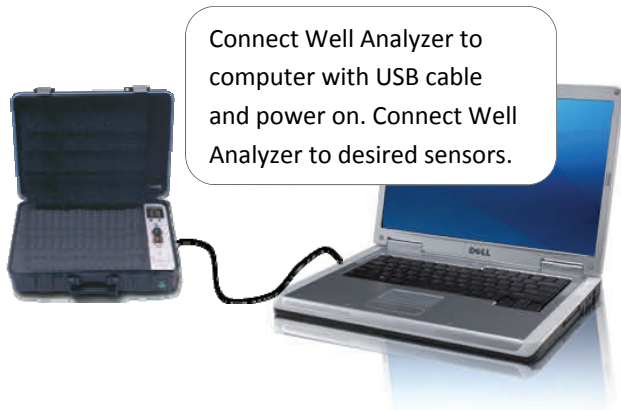




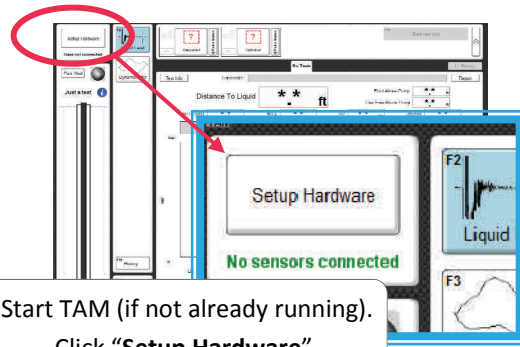
Wired Liquid Level Sensor Setup



1 Connect Well Analyzer & Sensors

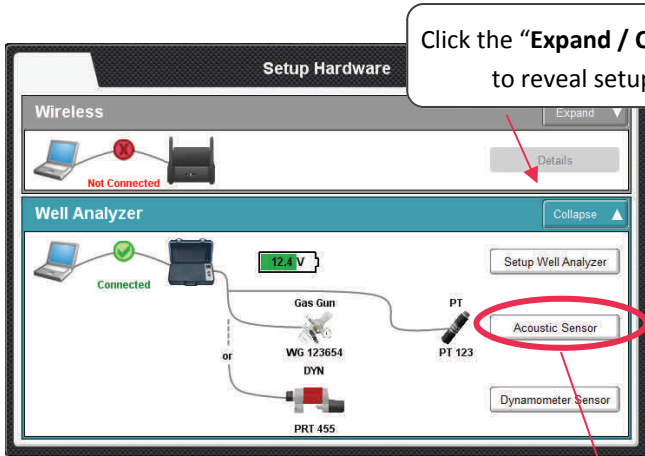


Connect Well Analyzer to computer with USB cable and power on. Connect Well Analyzer to desired sensors.



Start TAM (if not already running). Click "Setup Hardware".

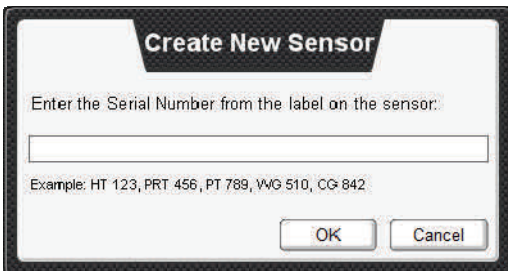
2 Select & Configure Sensors



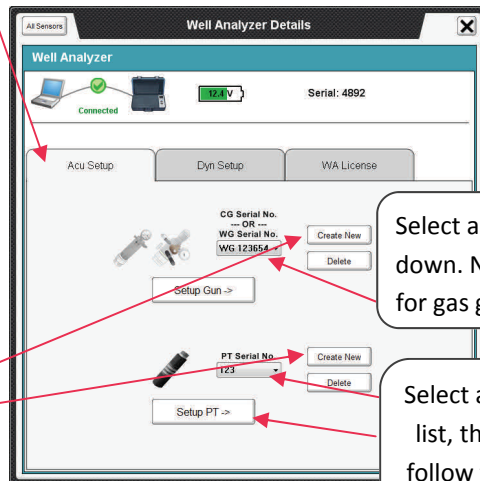
Click the "Expand / Collapse" toggle to reveal setup options

Click "Acoustic Sensor"

Acoustic



If the desired sensor does not appear in the drop down list, click "Create New". Enter the sensor's serial number to add the sensor to the drop down list.

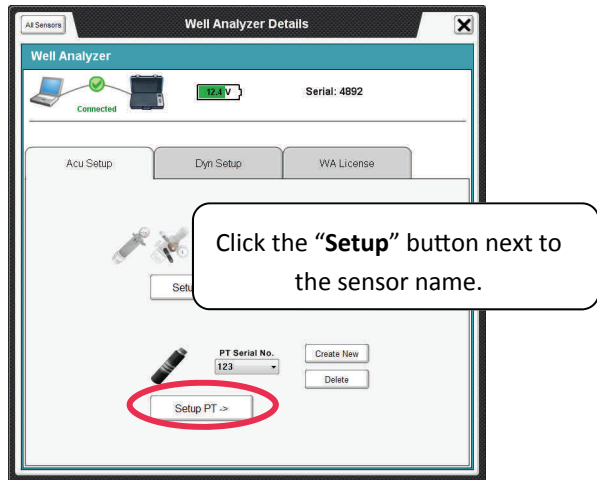


Select a gas gun from the drop down. No further setup is needed for gas guns

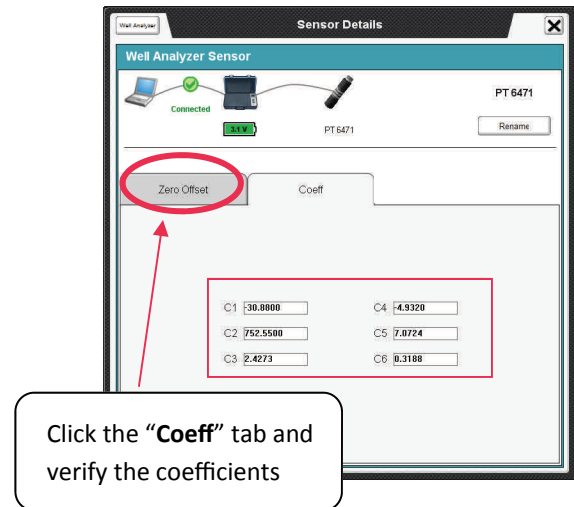
Select a PT from the drop down list, then click "Setup PT" and follow the directions for sensor setup on the next page.



3 Open Detail Screen

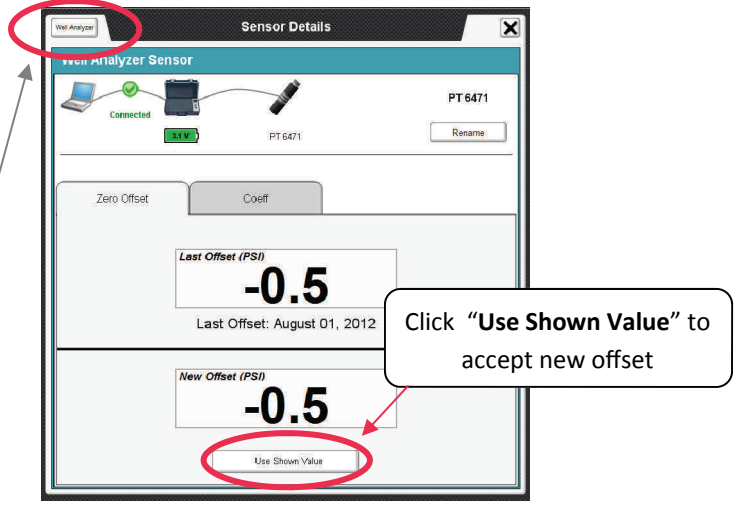
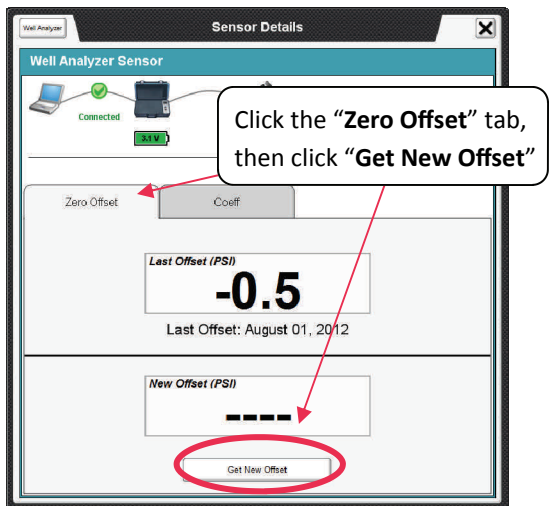


4 Enter Coefficients



5 Zero Offset (For PT's Only)

Verify that the pressure is atmospheric



Click the **"Well Analyzer"** button to return to the main setup screen and configure other devices, or close the popup window to proceed with testing. Changes will save automatically.