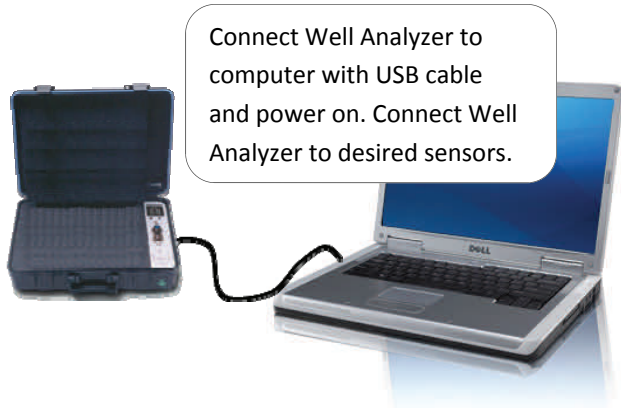




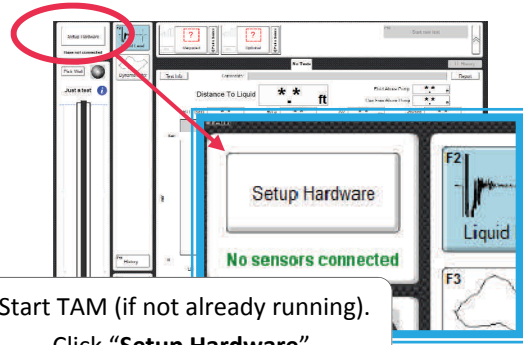
Wired Dynamometer Sensor Setup



1 Connect Well Analyzer & Sensors

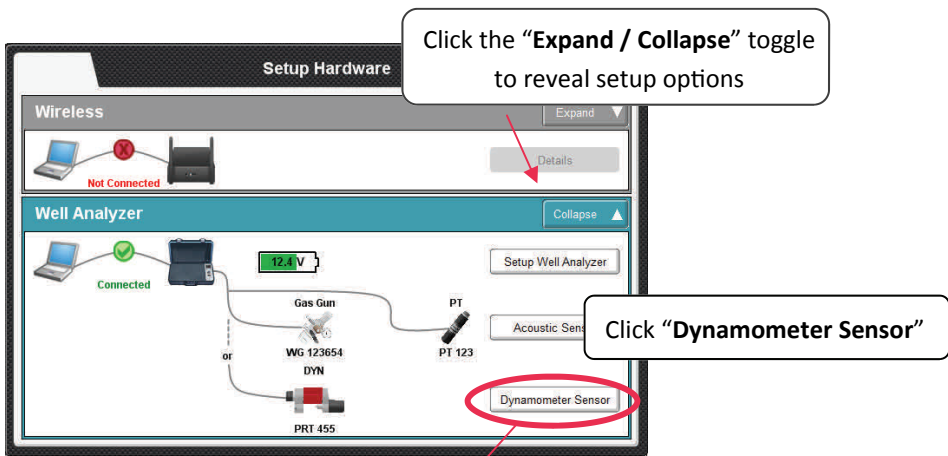


Connect Well Analyzer to computer with USB cable and power on. Connect Well Analyzer to desired sensors.



Start TAM (if not already running). Click "Setup Hardware".

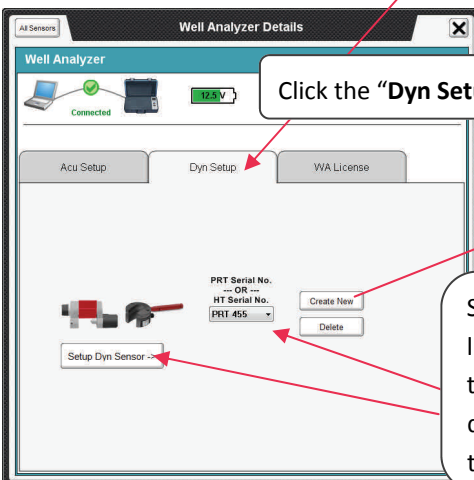
2 Select & Configure Sensors



Click the "Expand / Collapse" toggle to reveal setup options

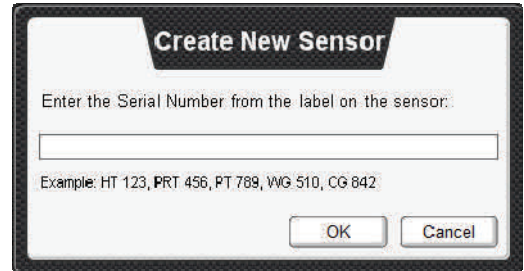
Click "Dynamometer Sensor"

Dynamometer



Click the "Dyn Setup" tab

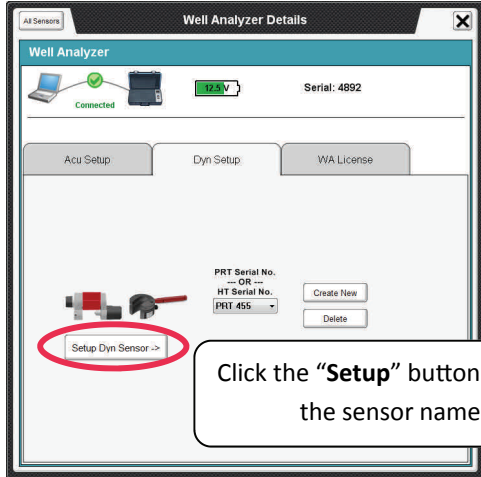
Select a device from the drop down list, then click "Setup Dyn Sensor". If the desired device is not in the drop down list, click "Create New". Close the popup window to proceed.



Enter the sensor's serial number to add the sensor to the drop down list.

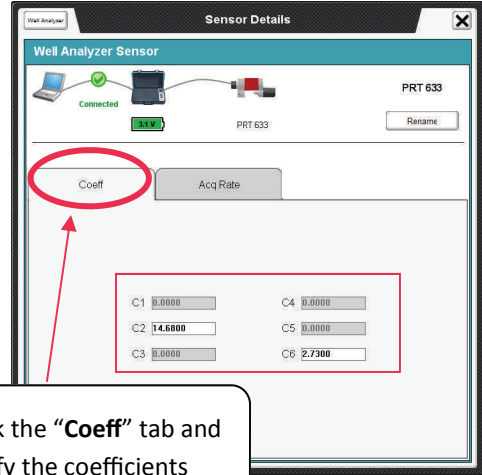


3 Open Detail Screen



Click the **"Setup"** button next to the sensor name

4 Enter Coefficients

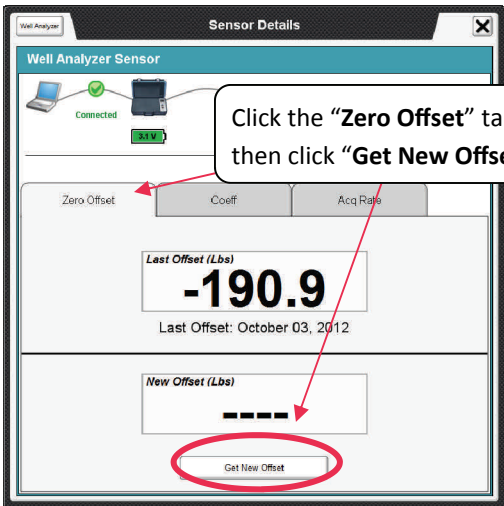


Click the **"Coeff"** tab and verify the coefficients

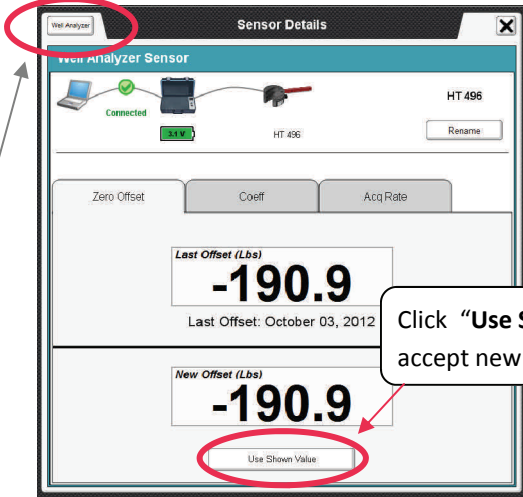
For PRT's no additional setup is required. You may close the popup window and proceed with testing. For HT's continue to Step 3.

5 Zero Offset (For HT's Only)

Verify that the HT sensor is not loaded.



Click the **"Zero Offset"** tab, then click **"Get New Offset"**



Click **"Use Shown Value"** to accept new offset

Click the **"Well Analyzer"** button to return to the main setup screen and configure other devices, or close the popup window to proceed with testing. Changes will save automatically.