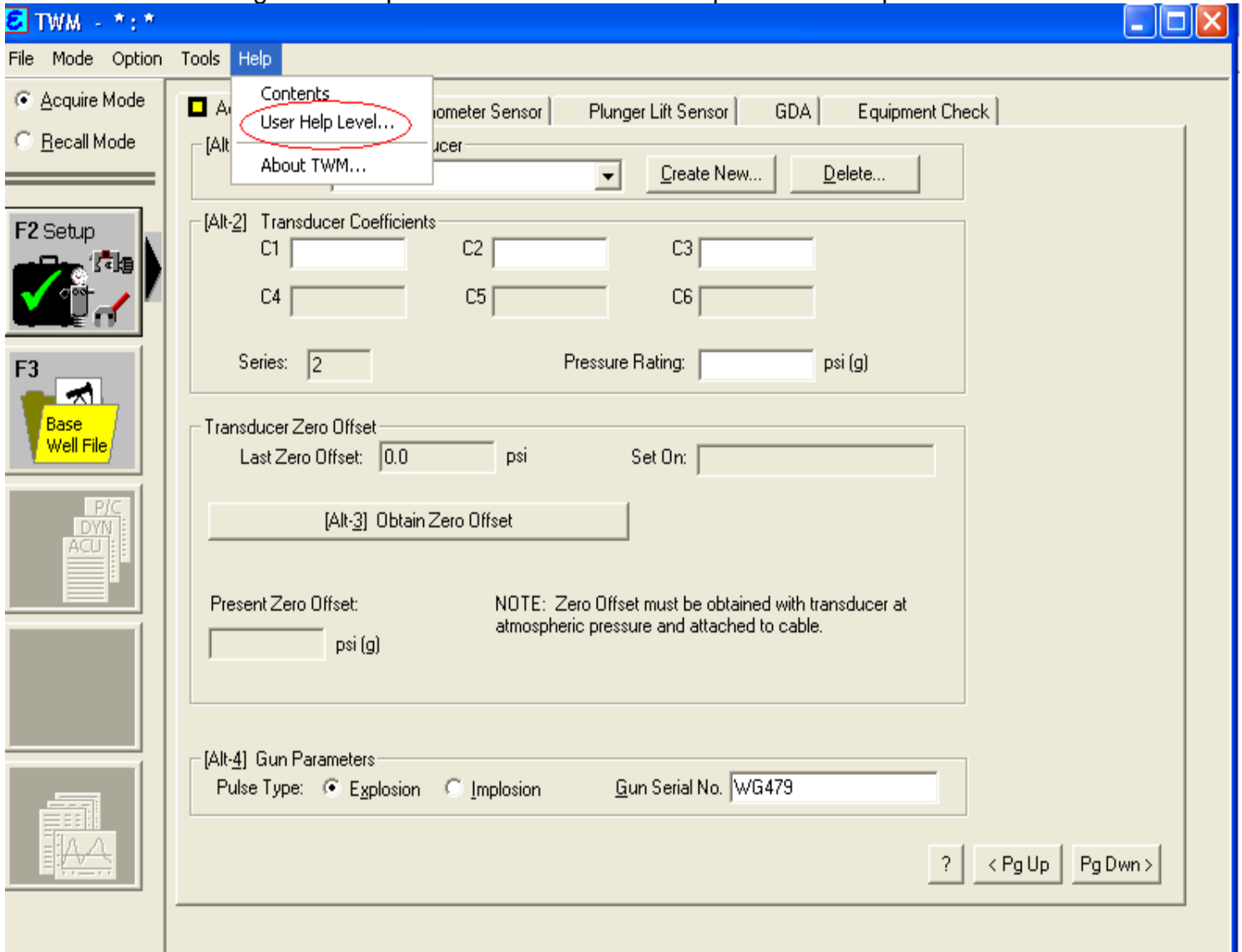


CHECK FOR PRESSURE TRANSIENT TESTING CAPALBILITIES

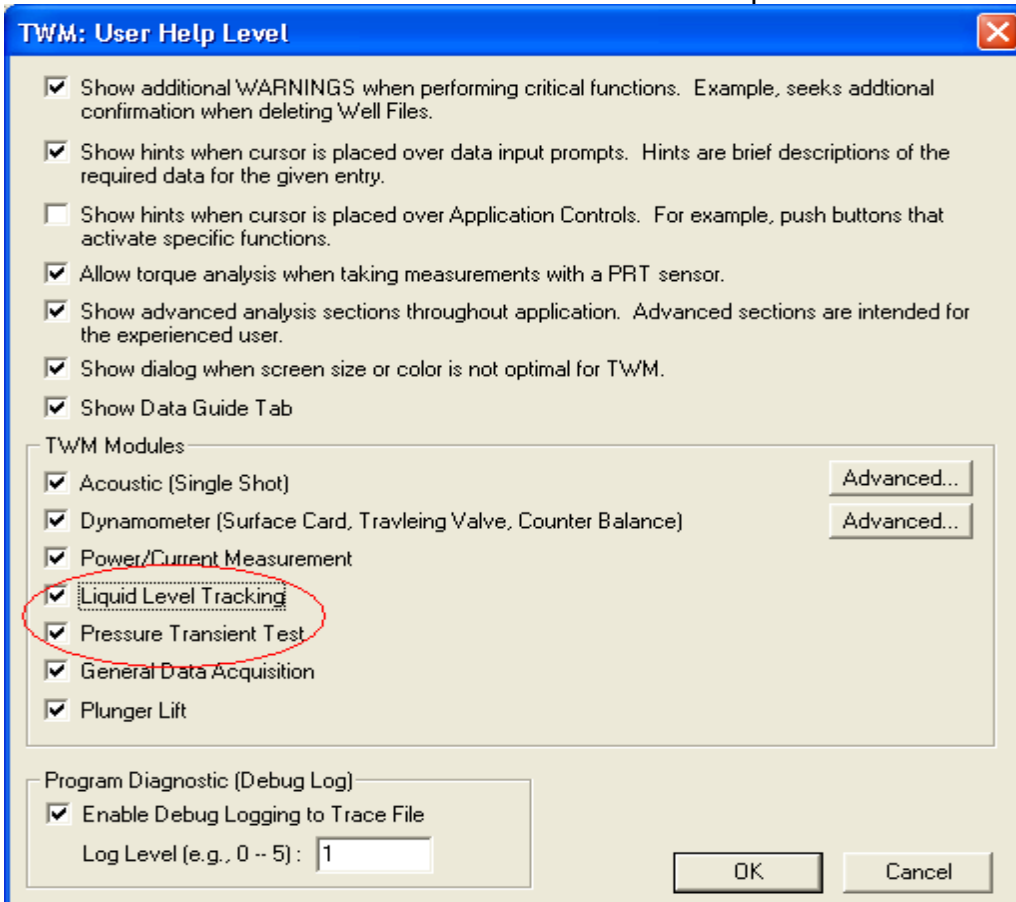
1. Start TWM from desk top



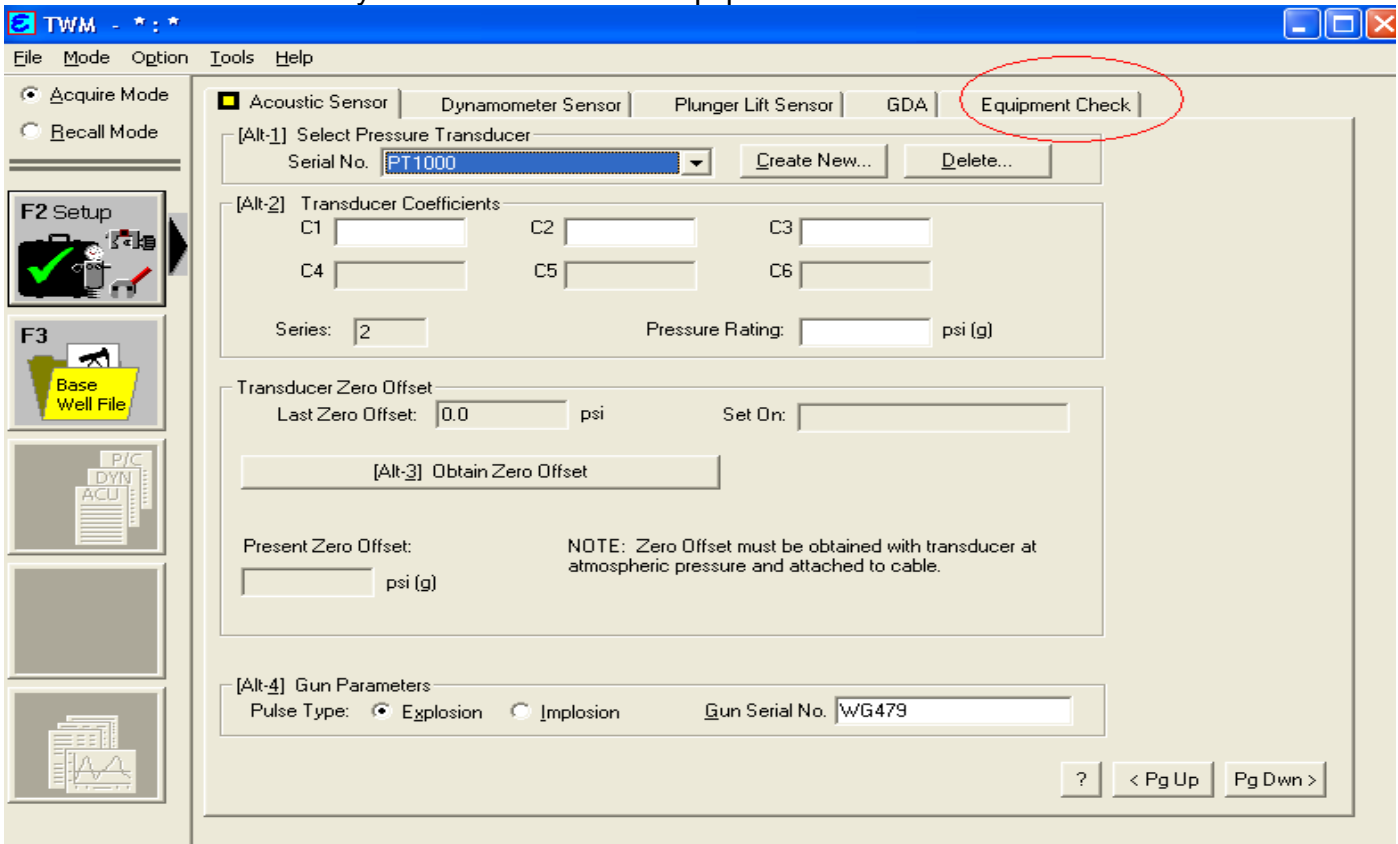
2. After TWM starts go to the top menu bar and click on help and user help level.



3. Make sure there is a check mark in the boxes for pressure transient and for liquid level tracking.



4. Now make sure the USB cable from the well analyzer is plugged into the computer USB port. And turn on the well analyzer and click on the equipment tab.



5. Make sure that your analyzer has **yes** pressure transient and liquid level tracking capabilities.

The screenshot displays the TWM software interface. At the top, the menu bar includes File, Mode, Option, Tools, and Help. The main window is divided into several sections:

- Mode Selection:** Radio buttons for 'Acquire Mode' (selected) and 'Recall Mode'.
- Sensor Selection:** Tabs for 'Acoustic Sensor', 'Dynamometer Sensor', 'Plunger Lift Sensor', 'GDA', and 'Equipment Check' (checked).
- Internal Well Analyzer Battery:** A bar chart showing 'Voltage' at 12.85 volts and 'Remaining On Time' at 8.3 hours. Below the chart, 'Battery Temperature' is displayed as 76.7 deg F.
- Well Analyzer Configuration & Capability:** A text box containing:
 - Driver Description: Model E3 - USBDrv
 - Firmware Version Number: 07
 - Status: Pressure Buildup: YES, Plunger Lift: YES, Liquid Level Tracking: YES, Firmware Date: Boot-02062001, FW-11072006
 - Hardware Rev: R3
 - WA SN: 4675
 - Comment: AutoOff (mins): 120
- Note:** A text box stating: 'Note: Display of internal battery voltage and battery temperature, indicates that the computer is communicating with the well analyzer's internal electronics and sensor measurements may be acquired.'
- Buttons:** 'Advanced Settings...', '[Alt-2] Trouble Shoot Wizard...', '?', '< Pg Up', and 'Pg Dwn >'.